

Introduction

Without actuators, cost-effective automated control valve, applicable for various kinds of demanding applications.

Size range: 50~300mm, 2" ~12" in

The Connection Method : Flange

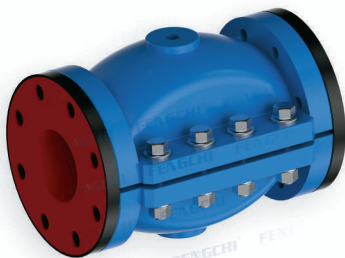
Actuating mode: air or liquid

Operating differential pressure: ≥ 2 bar

Applicable Media: Powder, Slurry,

Particles

Working Temperature: $-40\sim 70^{\circ}\text{C}$

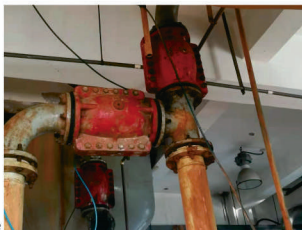


Principle

Air operated pinch valve provides a unique and cost-effective solution for fluid control problems, the secret is the rubber sleeve-the valve's only part in contact with fluid medium. Actuation of the valve is accomplished by air or liquid placed directly on the elastomer sleeve. The valve body acts as a built-in actuator, eliminating costly pneumatic, hydraulic, or electric actuators. We can shut on/off or adjust the valve by controlling the air pressure in the annular space between valve body and valve sleeve, when pressure difference is up to 2bar, the pinch valve will be shut off tightly. The sleeve's flexibility allows the valve to shut off drop-tight on solids, and avoids damage on the valve. Sealing area is equal to 95% length of the valve. There are no seats or packing to replace, no cavities or dead spots to collect debris and bind valve operation either. The abrasive resistance of pinch valve is incomparable, it is like another part of the pipeline when the valve is fully open. Pinch valve is usually applicable for hard-to-reach locations or severe demanding applications since there are no external links, levers, pistons or rotating parts to cause downtime.

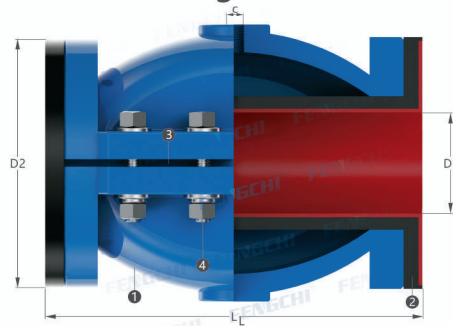
Features

- Shut off drop-tight on solids
- Valve body acts as a built-in actuator
- No gaps or dead spots to bind valve operation
- Simple design, not affected by harsh external environments
- No sealing elements to replace or maintain at anytime
- A variety of choice for sleeve materials- to meet the needs for different media
- Full bore, extra thick or conical type of valve sleeve



Split Air operated pinch valve

Dimension drawing



No.	Name	Optional Material
1	Body material	Cast steel, 304/316/316L Stainless steel
2	Valve sleeve	NR, EPDM, CR, NBR, IIR, FPM, CSM
3	Sealing	Compound Rubber
4	Bolt	Cast steel, 304/316/316L Stainless steel

Dimension table

Model	DN (mm)	D2	C	L	重量 (kg)
FC50-QGN	DN50	165	G1/4"	225	14
FC65-QGN	DN65	185	G1/4"	250	18
FC80-QGN	DN80	200	G3/8"	300	25
FC100-QGN	DN100	220	G3/8"	310	38
FC125-QGN	DN125	250	G3/8"	250	55
FC150-QGN	DN150	285	G3/8"	510	75
FC200-QGN	DN200	340	G3/8"	560	100
FC250-QGN	DN250	395	G3/8"	600	190
FC300-QGN	DN300	445	G3/8"	650	290